

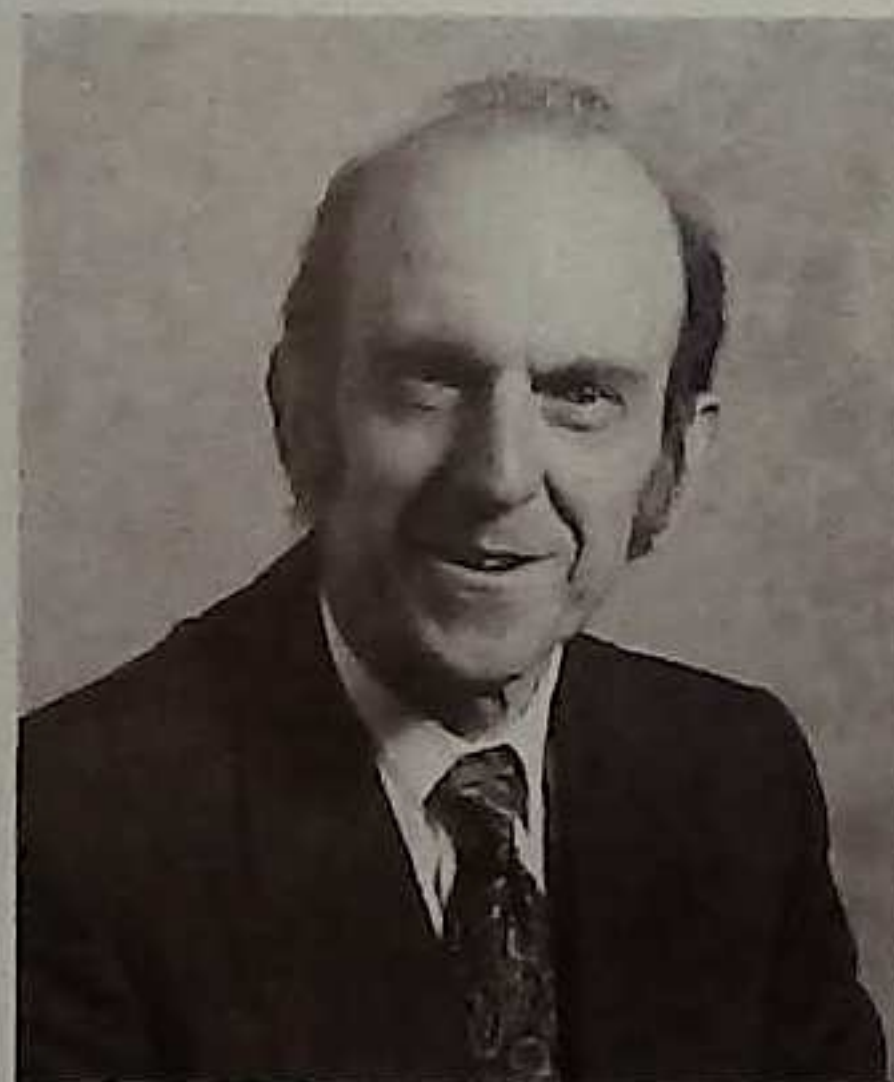
## QUESTIONS THAT NEED ANSWERS

1. Who introduced home help charges for the sick and elderly on Income Support?
2. Who cut the home help and school meals service?
3. Who closed one residential home for the elderly at Kettering, one at Rushden, two at Northampton and three at Wellingborough?
4. Who has made an increasing number of teachers and ancillary workers redundant every year since they took power?
5. Who planned to close Longtown Adventure Centre and Arkwright Hall?
6. Who refuses to provide enough money for school building maintenance?
7. Who planned the closure of Drayton Walk Centre for people with learning disabilities?
8. Who cut back energy conservation projects?
9. Who cut back on rural traffic calming?
10. Who is building new County Offices costing over £14 million?

**THE TORIES!!!!!!**

## TONY ALLEN

### Your Labour Candidate for Desborough



Tony Allen is aged 57 and married with 3 children. He is a Senior Clerical Officer at Euston. He is a member of the Transport and Salaried Staffs Association. He has been a County Councillor for 26 years, during which he has served

on major committees, presently on Policy and Resources and Public Protection. Member of Desborough Town Council since 1963 and now Chairman. School Governor of Havelock Infants School and now Chairman.

"As Desborough Labour Party's candidate, I have fought to ensure that the voice of Desborough is heard and our Town does not become a neglected part of the County. Our community has a right to a fair share of available resources. As a County Councillor I have become deeply concerned over the cutbacks in social services, to Youth service provision and the constant tampering with our education system. Remember that a Conservative controlled County Council has implemented many of the cuts in services. I strongly believe in the need for "REAL" community Policing which gives high priority to crime prevention, putting more Police on the beat in touch with the community.

I hope you continue to give me your support with the work I enjoy as an active, strong advocate for Desborough. Your concerns are my concerns".

# Tony ALLEN Labour



Thursday 6 May

PLEASE DISPLAY IN YOUR WINDOW

Published by M.O. Thomas, 97 Charles Street, Northampton. Printed by First Impressions, Wellingborough, Northants.



# Labour: the better way forward in Northamptonshire

## A HEADSTART FOR ALL OUR CHILDREN

A good education is not a luxury for the rich, but the birthright of us all.

- We will start building nursery schools again.
- We will tackle the backlog of repairs to schools and replace mobile classrooms with proper buildings.
- We will continue to campaign for local control of our schools in partnership with local communities.
- We will help the Youth Service to widen the horizons of the young and encourage the positive use of leisure.



## ON THE RIGHT LINES

- We need a co-ordinated rail and road policy that safeguards our environment.
- We will support an international rail-freight terminal in the county.
- We will support a county-wide bus pass scheme for the elderly.

## COMPASSION BACK ON THE AGENDA

Money spent on quality care for those in need is money well spent.

- We will give better services to the elderly and disabled by supporting them in their own homes with carers and home helps, and provide enough residential places for those who need them.
- We will protect and help children "at risk".
- We will provide good foster homes and opportunities for adoption.
- We will provide supported lodgings and half-way homes for the mentally ill.

We will listen to the views of our clients, their carers and the community to help us give quality service.

## A GREENER, CLEANER AND SAFER COUNTY

If we want to make our county a better place to live in and preserve something worthwhile for our grandchildren, we must do more than talk about it.

- We will provide more recycling centres.
  - We will encourage energy saving.
  - We will improve traffic conditions in towns and villages.
  - We will keep country parks free.
- If we don't look after our corner of the planet, who will?



## IN THE COMMUNITY AND BACK ON THE BEAT

No-one wants communities which are poorly policed in which criminals have their own way. It's common sense to encourage the police and the communities they serve to work together.

- We support the call for more police on the beat and in the communities where the problems are.
- We believe in a partnership between police and the public in the fight against crime.
- We want a Northamptonshire Police force staffed by people we can talk to when we need them - not a remote regional force.